

Preventive maintenance & inspection
**Reference and zero
point systems**



Avoid unexpected production stops

WHY ANNUAL MAINTENANCE?

Regular reconditioning minimises production stops and optimises function, precision and performance. Worn parts are replaced with new.

Note: Air quality has a great effect on service intervals. Class 5.3.5 ISO 8573-1 air quality is a requirement. The air must always be dry.

If maintenance is omitted, the following can happen:

- Compromised thrust/clamping force (e.g. dirt and rusty springs – chuck compromised). The precision of produced parts is compromised.
- Seized up chuck (dirt, rusted springs and aged O-rings are impossible to detect). Especially in automated plant, there can be knock-on damage.

THIS IS HOW IT WORKS

System 3R's products are precision tools and must, therefore, be treated as such. So that equipment and plant can always give peak performance, we offer our "Preventive maintenance and inspection" service.

System 3R's precision tools are built to give extremely long service. To ensure that stated tolerances are respected, annual maintenance and inspection are required. We begin with a review of your System 3R products and establish possible needs.

If you want us to, we will also check whether training is required.

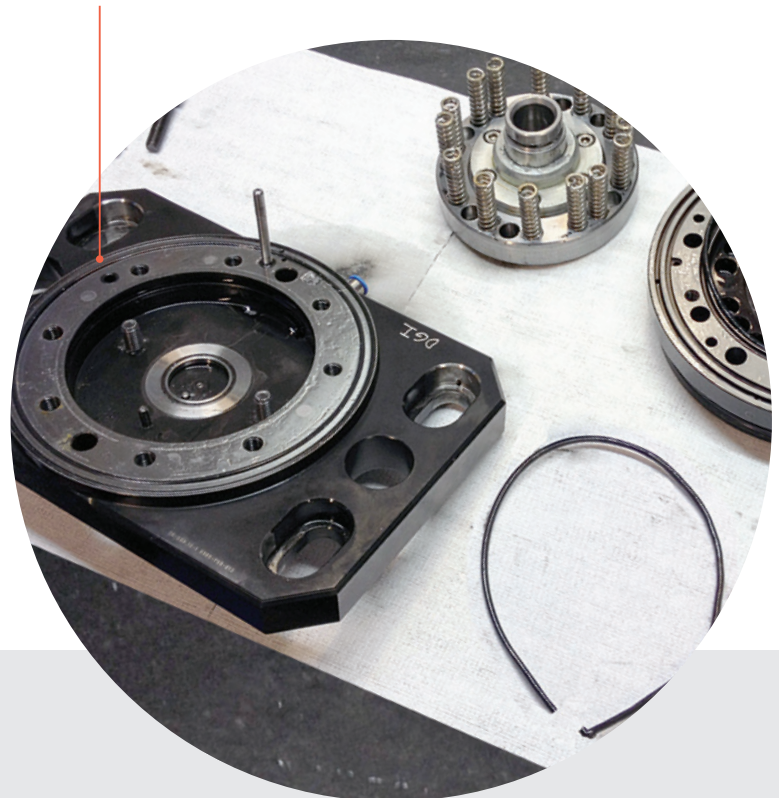
ALWAYS IN TOP CONDITION!

Production stops mean lost hours of production. So that equipment and plant can always give peak performance, we offer our "Preventive maintenance and inspection" service. System 3R's products are built to give extremely long service. To ensure this durability, annual maintenance and inspection are required.

Planned maintenance reduces unplanned production stops. Preventive maintenance can be scheduled on the basis of calendar time or operating time. Planned maintenance should be carried out at least once every 12 months.

- High quality assured with System 3R servicing
- Servicing as per the service schedule.
- Authorised service technicians.
- Always original parts.
- Maintained precision and performance.
- Regular offers for "call-back visits" when it is time for maintenance and inspection.

Broken O-ring – Many years in use with no maintenance.



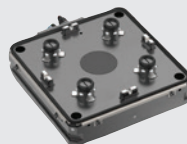
EXAMPLES OF CHUCKS IN OUR SERVICE PROGRAMME



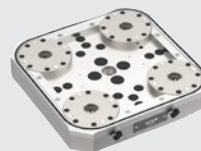
Chuck, Dynafix



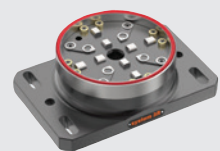
Integrated chuck, Macro



Chuck, GPS 240



Chuck, Delphin



Chuck, MacroMagnum

Expensive production stops can be avoided with regular maintenance intervals



CERTIFICATE

We complete the checklist and date the report. The documentation assures the quality of the performed work and provides peace of mind in guarantee cases.



TERMS AND CONDITIONS

To minimise production stops, all work is carried out at the customer's premises, whenever possible.

Note: Complex products such as B axis and rotating spindles are serviced in our own facilities (Sweden or Switzerland).

Preventive maintenance and inspection should be arranged via your local service centre. For contact details, please refer to www.system3r.com.

Use our Customer Services to optimise your equipment uptime

System 3R's Customer Services department is uniquely positioned to help you maximise the availability, value, precision and productivity of your System 3R equipment. Our cost-effective, customer-centric and expert services put your success at the centre, ramp up your productivity and ensure predictable, uninterrupted uptime.

System 3R's service engineers are your expert partners for a wide range of success-triggering services.

For further details, contact your local System 3R dealer.

www.system3r.com

